



PRINCE SHRI VENKATESWARA ARTS AND SCIENCE COLLEGE

Gowriyakkam, Chennai-600073.

Affiliated to University of Madras

FACULTY FEEDBACK ON CURRICULUM, INFRASTRUCTURE FACILITIES & AMBIENCE OF THE INSTITUTION – ANALYSIS REPORT

Academic Year

2018-19

Department

B.Sc. Biochemistry

Number of Respondents

4

Feedback Rate: Strongly Agree (5), Agree (4), Neutral (3), Disagree (2), Strongly Disagree (1)

S. No	Feedback on Curriculum, infrastructure facilities & ambience of the institution	5	4	3	2	1
1	Rate the sequence of the courses provided in the curriculum (Related to Curriculum)	2	1	1	0	0
2	Rate the syllabus of the courses in relation to the competencies expected out of the course (Related to Curriculum)	1	2	1	0	0
3	Rate the Curriculum facilitation for adoption of new techniques/education tools / strategies in teaching. (Related to Curriculum)	2	2	0	0	0
4	Rate the coverage of Programme / course outcome with the curriculum (Related to Curriculum)	2	1	0	1	0
5	Rate the allocation of the credits and contact hours (L-T-P) to the courses (Related to Curriculum)	1	2	1	0	0
6	Rate the offering of the electives in terms of their relevance to the specialization streams and technological advancements (Related to Curriculum)	2	2	0	0	0
7	Rate the courses in terms of extra learning or self-learning considering the design of the courses. (Related to Curriculum)	2	1	1	0	0
8	Rate the professional development, faculty development and administrative training programs conducted by the institution (Related to Curriculum)	2	1	1	0	0



B. Kalpana
PRINCIPAL
PRINCE SHRI VENKATESHWARA
ARTS AND SCIENCE COLLEGE
GOWRIYAKKAM, CHENNAI-600073.



PRINCE SHRI VENKATESWARA ARTS AND SCIENCE COLLEGE

Gowrivakkam, Chennai-600073.

Affiliated to University of Madras

9	Rate the composition of the courses in terms of Language papers, Core Papers, Allied Papers, Elective Papers, Soft Skills, Non-major Electives, Value Education, Project etc. (Related to Curriculum)	0	3	1	0	0
10	Rate the availability of text books, reference books, Digital Resources and Reading Material Support facilities in library and research environment (Related to infrastructure facilities & ambience of the institution)	1	2	0	0	1
11	Rate the infrastructure available in the college/ department and its usage efficiently (Related to infrastructure facilities & ambience of the institution)	2	2	0	0	0
12	Rate the classroom, lab, IT and other facilities (Related to infrastructure facilities & ambience of the institution)	3	0	1	0	0
13	Rate the maintenance of classrooms, laboratory, sports facilities, faculty cabin, toilets, rest rooms etc. (Related to infrastructure facilities & ambience of the institution)	2	2	0	0	0
14	Rate the encouragement by the institution for performing research, startup and entrepreneurial activities by the faculty (Related to ambience of the institution)	2	1	0	1	0
15	Rate the opportunity extended and financial aid to participate in Faculty development, Conferences, Workshops and etc., (Related to ambience of the institution)	1	3	0	0	0
16	Rate the working environment such as the relationship with co-workers and superiors, organizational culture etc. (Related to ambience of the institution)	1	3	0	0	0
17	Rate the faculty welfare measures taken by the institution (Related to ambience of the institution)	2	2	0	0	0
18	Rate the recognition/ appraisal system / Incentive/ Appreciation of the individual work by the institution (Related to ambience of the institution)	1	2	1	0	0
19	Rate the encouragement for taking-up consultancy works (Related to ambience of the institution)	0	2	2	0	0
20	Rate the uniform work distribution and work load for all the faculty in the department (Related to ambience of the institution)	1	2	1	0	0



B. Kalpana
PRINCIPAL
PRINCE SHRI VENKATESHWARA
ARTS AND SCIENCE COLLEGE
GOWRIVAKKAM, CHENNAI-600 073.



PRINCE SHRI VENKATESWARA ARTS AND SCIENCE COLLEGE

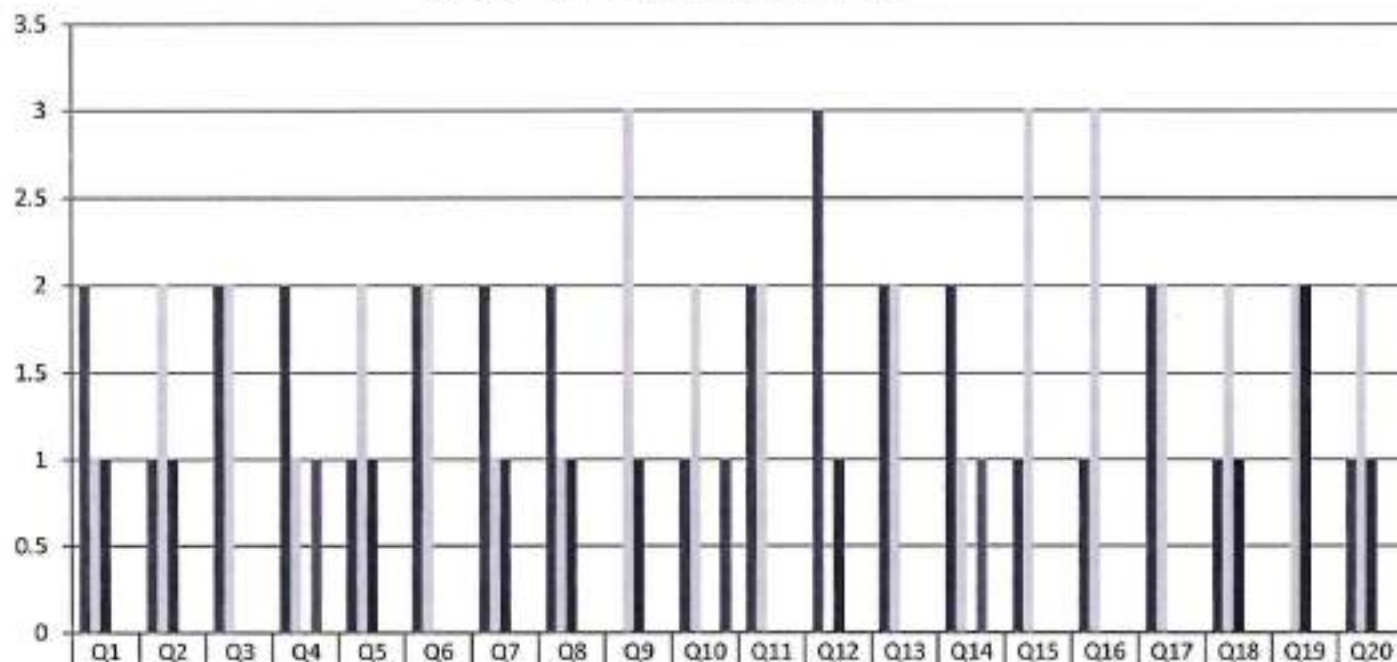
Gowrivakkam, Chennai-600073.

Affiliated to University of Madras

**FACULTY FEEDBACK ON CURRICULUM, INFRASTRUCTURE
FACILITIES & AMBIENCE OF THE INSTITUTION - 2018-2019**

B.Sc. BIOCHEMISTRY

(NUMBER OF RESPONDENTS - 4)



	Q1	Q2	Q3	Q4	Q5	Q6	Q7	Q8	Q9	Q10	Q11	Q12	Q13	Q14	Q15	Q16	Q17	Q18	Q19	Q20
Strongly Agree (5)	2	1	2	2	1	2	2	2	0	1	2	3	2	2	1	1	2	1	0	1
Agree (4)	1	2	2	1	2	2	1	1	3	2	2	0	2	1	3	3	2	2	2	2
Neutral (3)	1	1	0	0	1	0	1	1	1	0	0	1	0	0	0	0	0	1	2	1
Disagree (2)	0	0	0	1	0	0	0	0	0	0	0	0	0	1	0	0	0	0	0	0
Strongly Disagree (1)	0	0	0	0	0	0	0	0	0	1	0	0	0	0	0	0	0	0	0	0



B. Kalpana
PRINCIPAL
PRINCE SHRI VENKATESHWARA
ARTS AND SCIENCE COLLEGE
GOWRIVAKKAM, CHENNAI-600 073.



PRINCE SHRI VENKATESWARA ARTS AND SCIENCE COLLEGE

Gowrivakkam, Chennai-600073.

Affiliated to University of Madras

FACULTY FEEDBACK ON CURRICULUM, INFRASTRUCTURE FACILITIES & AMBIENCE OF THE INSTITUTION – ANALYSIS REPORT

Academic Year 2018-19
Department B.Sc.-Microbiology
Number of Respondents 3

Feedback Rate: Strongly Agree (5), Agree (4), Neutral (3), Disagree (2), Strongly Disagree (1)

S. No	Feedback on Curriculum, infrastructure facilities & ambience of the institution	5	4	3	2	1
1	Rate the sequence of the courses provided in the curriculum (Related to Curriculum)	0	2	1	0	0
2	Rate the syllabus of the courses in relation to the competencies expected out of the course (Related to Curriculum)	2	0	1	0	0
3	Rate the Curriculum facilitation for adoption of new techniques/education tools / strategies in teaching. (Related to Curriculum)	2	1	0	0	0
4	Rate the coverage of Programme / course outcome with the curriculum (Related to Curriculum)	0	2	1	0	0
5	Rate the allocation of the credits and contact hours (L-T-P) to the courses (Related to Curriculum)	2	0	1	0	0
6	Rate the offering of the electives in terms of their relevance to the specialization streams and technological advancements (Related to Curriculum)	2	0	1	0	0
7	Rate the courses in terms of extra learning or self-learning considering the design of the courses. (Related to Curriculum)	1	2	0	0	0
8	Rate the professional development, faculty development and administrative training programs conducted by the institution (Related to Curriculum)	1	1	1	0	0



PRINCE SHRI VENKATESWARA ARTS AND SCIENCE COLLEGE

Gowrivanckam, Chennai-600073.

Affiliated to University of Madras

9	Rate the composition of the courses in terms of Language papers, Core Papers, Allied Papers, Elective Papers, Soft Skills, Non-major Electives, Value Education, Project etc. (Related to Curriculum)	1	0	1	1	0
10	Rate the availability of text books, reference books, Digital Resources and Reading Material Support facilities in library and research environment (Related to infrastructure facilities & ambience of the institution)	2	1	0	0	0
11	Rate the infrastructure available in the college/ department and its usage efficiently (Related to infrastructure facilities & ambience of the institution)	2	0	1	0	0
12	Rate the classroom, lab, IT and other facilities (Related to infrastructure facilities & ambience of the institution)	1	2	0	0	0
13	Rate the maintenance of classrooms, laboratory, sports facilities, faculty cabin, toilets, rest rooms etc. (Related to infrastructure facilities & ambience of the institution)	2	0	0	1	0
14	Rate the encouragement by the institution for performing research, startup and entrepreneurial activities by the faculty (Related to ambience of the institution)	2	0	1	0	0
15	Rate the opportunity extended and financial aid to participate in Faculty development, Conferences, Workshops and etc., (Related to ambience of the institution)	1	1	1	0	0
16	Rate the working environment such as the relationship with co-workers and superiors, organizational culture etc. (Related to ambience of the institution)	1	2	0	0	0
17	Rate the faculty welfare measures taken by the institution (Related to ambience of the institution)	1	2	0	0	0
18	Rate the recognition/ appraisal system / Incentive/ Appreciation of the individual work by the institution (Related to ambience of the institution)	2	0	1	0	0
19	Rate the encouragement for taking-up consultancy works (Related to ambience of the institution)	2	0	1	0	0
	Rate the uniform work distribution and work load for all the faculty in the department (Related to ambience of the institution)	2	1	0	0	0



B. Kalpana
PRINCIPAL

PRINCE SHRI VENKATESHWARA
ARTS AND SCIENCE COLLEGE
GOWRIVANKAM, CHENNAI-600-073



PRINCE SHRI VENKATESWARA ARTS AND SCIENCE COLLEGE

Gowriakkam, Chennai-600073

Affiliated to University of Madras

**FACULTY FEEDBACK ON CURRICULUM, INFRASTRUCTURE
FACILITIES & AMBIENCE OF THE INSTITUTION - 2018-2019**

B.Sc. MICROBIOLOGY

(NUMBER OF RESPONDENTS - 3)



	Q1	Q2	Q3	Q4	Q5	Q6	Q7	Q8	Q9	Q10	Q11	Q12	Q13	Q14	Q15	Q16	Q17	Q18	Q19	Q20
Strongly Agree (5)	0	2	2	0	2	2	1	1	1	2	2	1	2	2	1	1	1	2	2	2
Agree (4)	2	0	1	2	0	0	2	1	0	1	0	2	0	0	1	2	2	0	0	1
Neutral (3)	1	1	0	1	1	1	0	1	1	0	1	0	0	1	1	0	0	1	1	0
Disagree (2)	0	0	0	0	0	0	0	0	1	0	0	0	1	0	0	0	0	0	0	0
Strongly Disagree (1)	0	0	0	0	0	0	0	0	0	0	0	0	0	0	0	0	0	0	0	0



B. Kalpana
PRINCIPAL

**PRINCE SHRI VENKATESHWARA
ARTS AND SCIENCE COLLEGE
GOWRIAKKAM, CHENNAI-600 073**



PRINCE SHRI VENKATESWARA ARTS AND SCIENCE COLLEGE

Gowrivaldtam, Chennai-600073.

Affiliated to University of Madras

FACULTY FEEDBACK ON CURRICULUM, INFRASTRUCTURE FACILITIES & AMBIENCE OF THE INSTITUTION – ANALYSIS REPORT

Academic Year 2018-19
Department B.Sc. Electronics and Communication Science
Number of Respondents 2

Feedback Rate: Strongly Agree (5), Agree (4), Neutral (3), Disagree (2), Strongly Disagree (1)

S. No	Feedback on Curriculum, infrastructure facilities & ambience of the institution	5	4	3	2	1
1	Rate the sequence of the courses provided in the curriculum (Related to Curriculum)	1	0	1	0	0
2	Rate the syllabus of the courses in relation to the competencies expected out of the course (Related to Curriculum)	2	0	0	0	0
3	Rate the Curriculum facilitation for adoption of new techniques/education tools / strategies in teaching. (Related to Curriculum)	1	1	0	0	0
4	Rate the coverage of Programme / course outcome with the curriculum (Related to Curriculum)	1	0	0	1	0
5	Rate the allocation of the credits and contact hours (L-T-P) to the courses (Related to Curriculum)	1	1	0	0	0
6	Rate the offering of the electives in terms of their relevance to the specialization streams and technological advancements (Related to Curriculum)	0	2	0	0	0
7	Rate the courses in terms of extra learning or self-learning considering the design of the courses. (Related to Curriculum)	2	0	0	0	0
8	Rate the professional development, faculty development and administrative training programs conducted by the institution (Related to Curriculum)	2	0	0	0	0



PRINCE SHRI VENKATESWARA ARTS AND SCIENCE COLLEGE

Gowrivakkam, Chennai-600073.

Affiliated to University of Madras

9	Rate the composition of the courses in terms of Language papers, Core Papers, Allied Papers, Elective Papers, Soft Skills, Non-major Electives, Value Education, Project etc. (Related to Curriculum)	2	0	0	0	0
10	Rate the availability of text books, reference books, Digital Resources and Reading Material Support facilities in library and research environment (Related to infrastructure facilities & ambience of the institution)	1	1	0	0	0
11	Rate the infrastructure available in the college/ department and its usage efficiently (Related to infrastructure facilities & ambience of the institution)	1	1	0	0	0
12	Rate the classroom, lab, IT and other facilities (Related to infrastructure facilities & ambience of the institution)	1	0	1	0	0
13	Rate the maintenance of classrooms, laboratory, sports facilities, faculty cabin, toilets, rest rooms etc. (Related to infrastructure facilities & ambience of the institution)	2	0	0	0	0
14	Rate the encouragement by the institution for performing research, startup and entrepreneurial activities by the faculty (Related to ambience of the institution)	1	0	0	1	0
15	Rate the opportunity extended and financial aid to participate in Faculty development, Conferences, Workshops and etc., (Related to ambience of the institution)	1	1	0	0	0
16	Rate the working environment such as the relationship with co-workers and superiors, organizational culture etc. (Related to ambience of the institution)	2	0	0	0	0
17	Rate the faculty welfare measures taken by the institution (Related to ambience of the institution)	2	0	0	0	0
18	Rate the recognition/ appraisal system / Incentive/ Appreciation of the individual work by the institution (Related to ambience of the institution)	2	0	0	0	0
19	Rate the encouragement for taking-up consultancy works (Related to ambience of the institution)	1	0	1	0	0
20	Rate the uniform work distribution and work load for all the faculty in the department (Related to ambience of the institution)	1	1	0	0	0



B. Kalpana
PRINCIPAL
PRINCE SHRI VENKATESHWARA
ARTS AND SCIENCE COLLEGE
GOWRIVAKKAM, CHENNAI-600073.



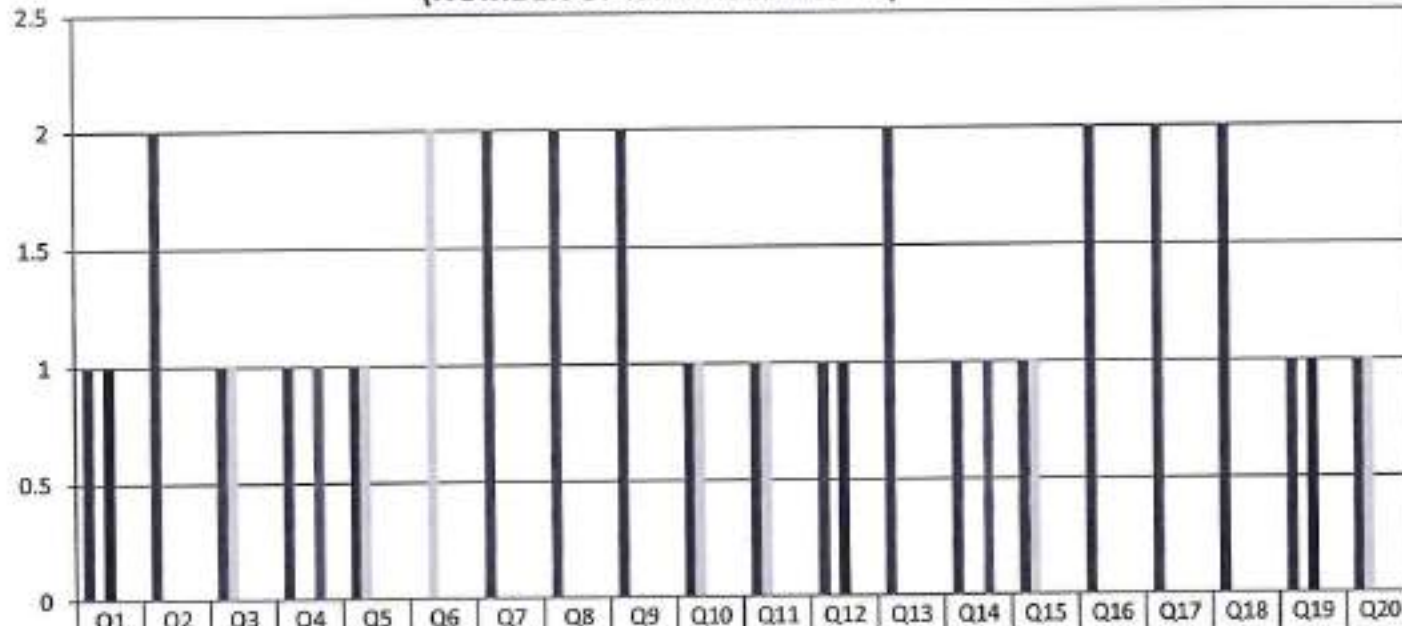
PRINCE SHRI VENKATESWARA ARTS AND SCIENCE COLLEGE

Gowrivakkam, Chennai-600073.

Affiliated to University of Madras

**FACULTY FEEDBACK ON CURRICULUM, INFRASTRUCTURE
FACILITIES & AMBIENCE OF THE INSTITUTION - 2018-2019
B.Sc. ELECTRONICS AND COMMUNICATION SCIENCE**

(NUMBER OF RESPONDENTS - 2)



	Q1	Q2	Q3	Q4	Q5	Q6	Q7	Q8	Q9	Q10	Q11	Q12	Q13	Q14	Q15	Q16	Q17	Q18	Q19	Q20
Strongly Agree (5)	1	2	1	1	1	0	2	2	2	1	1	1	2	1	1	2	2	2	1	1
Agree (4)	0	0	1	0	1	2	0	0	0	1	1	0	0	0	1	0	0	0	0	1
Neutral (3)	1	0	0	0	0	0	0	0	0	0	0	1	0	0	0	0	0	0	1	0
Disagree (2)	0	0	0	1	0	0	0	0	0	0	0	0	0	1	0	0	0	0	0	0
Strongly Disagree	0	0	0	0	0	0	0	0	0	0	0	0	0	0	0	0	0	0	0	0



B. Kalpana
PRINCIPAL
PRINCE SHRI VENKATESHWARA
ARTS AND SCIENCE COLLEGE
GOWRIVAKKAM, CHENNAI-600 073



PRINCE SHRI VENKATESWARA ARTS AND SCIENCE COLLEGE

Gowrivakkam, Chennai-600073.

Affiliated to University of Madras

FACULTY FEEDBACK ON CURRICULUM, INFRASTRUCTURE FACILITIES & AMBIENCE OF THE INSTITUTION – ANALYSIS REPORT

Academic Year 2018-19
Department B.Sc.-Computer Science
Number of Respondents 16

Feedback Rate: Strongly Agree (5), Agree (4), Neutral (3), Disagree (2), Strongly Disagree (1)

S. No	Feedback on Curriculum, infrastructure facilities & ambience of the institution	5	4	3	2	1
1	Rate the sequence of the courses provided in the curriculum (Related to Curriculum)	6	6	4	0	0
2	Rate the syllabus of the courses in relation to the competencies expected out of the course (Related to Curriculum)	7	7	1	1	0
3	Rate the Curriculum facilitation for adoption of new techniques/education tools / strategies in teaching. (Related to Curriculum)	5	7	4	0	0
4	Rate the coverage of Programme / course outcome with the curriculum (Related to Curriculum)	6	6	4	0	0
5	Rate the allocation of the credits and contact hours (L-T-P) to the courses (Related to Curriculum)	5	5	6	0	0
6	Rate the offering of the electives in terms of their relevance to the specialization streams and technological advancements (Related to Curriculum)	5	7	4	0	0
7	Rate the courses in terms of extra learning or self-learning considering the design of the courses. (Related to Curriculum)	8	5	2	1	0
8	Rate the professional development, faculty development and administrative training programs conducted by the institution (Related to Curriculum)	5	7	4	0	0



PRINCE SHRI VENKATESWARA ARTS AND SCIENCE COLLEGE

Gowrivakkam, Chennai-600073.

Affiliated to University of Madras

9	Rate the composition of the courses in terms of Language papers, Core Papers, Allied Papers, Elective Papers, Soft Skills, Non-major Electives, Value Education, Project etc. (Related to Curriculum)	5	7	3	1	0
10	Rate the availability of text books, reference books, Digital Resources and Reading Material Support facilities in library and research environment (Related to infrastructure facilities & ambience of the institution)	6	7	2	1	0
11	Rate the infrastructure available in the college/ department and its usage efficiently (Related to infrastructure facilities & ambience of the institution)	8	6	2	0	0
12	Rate the classroom, lab, IT and other facilities (Related to infrastructure facilities & ambience of the institution)	6	7	3	0	0
13	Rate the maintenance of classrooms, laboratory, sports facilities, faculty cabin, toilets, rest rooms etc. (Related to infrastructure facilities & ambience of the institution)	7	6	2	1	0
14	Rate the encouragement by the institution for performing research, startup and entrepreneurial activities by the faculty (Related to ambience of the institution)	9	4	3	0	0
15	Rate the opportunity extended and financial aid to participate in Faculty development, Conferences, Workshops and etc., (Related to ambience of the institution)	5	7	3	1	0
16	Rate the working environment such as the relationship with co-workers and superiors, organizational culture etc. (Related to ambience of the institution)	7	5	4	0	0
17	Rate the faculty welfare measures taken by the institution (Related to ambience of the institution)	6	7	2	1	0
18	Rate the recognition/ appraisal system / Incentive/ Appreciation of the individual work by the institution (Related to ambience of the institution)	8	7	0	1	0
19	Rate the encouragement for taking-up consultancy works (Related to ambience of the institution)	5	6	5	0	0
20	Rate the uniform work distribution and work load for all the faculty in the department (Related to ambience of the institution)	7	6	3	0	0



B. Kalpana
PRINCIPAL
PRINCE SHRI VENKATESHWARA
ARTS AND SCIENCE COLLEGE
GOWRIVAKKAM, CHENNAI-600 073



PRINCE SHRI VENKATESWARA ARTS AND SCIENCE COLLEGE

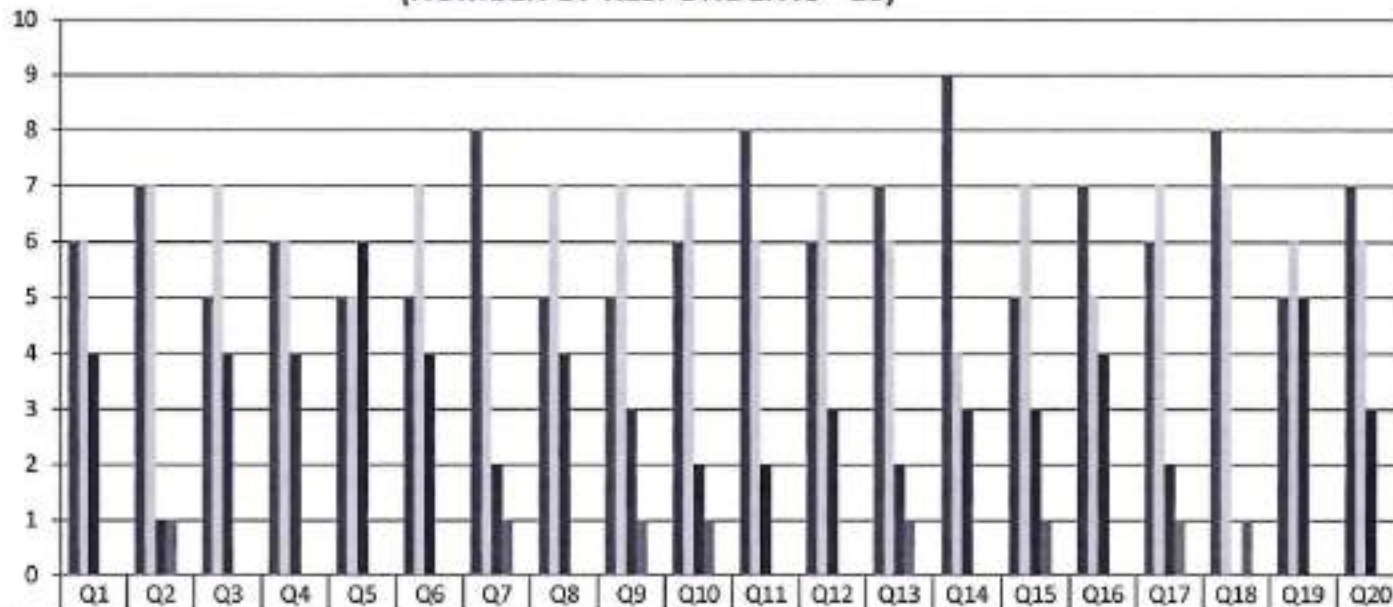
Gowrivakkam, Chennai-600073.

Affiliated to University of Madras

**FACULTY FEEDBACK ON CURRICULUM, INFRASTRUCTURE
FACILITIES & AMBIENCE OF THE INSTITUTION - 2018-2019**

B.Sc. COMPUTER SCIENCE

(NUMBER OF RESPONDENTS - 16)



B. Kalpana
PRINCIPAL
 PRINCE SHRI VENKATESHWARA
 ARTS AND SCIENCE COLLEGE
 GOWRIVAKKAM, CHENNAI-600 073.



PRINCE SHRI VENKATESWARA ARTS AND SCIENCE COLLEGE

Gowrivaldkam, Chennai-600073.

Affiliated to University of Madras

FACULTY FEEDBACK ON CURRICULUM, INFRASTRUCTURE FACILITIES & AMBIENCE OF THE INSTITUTION – ANALYSIS REPORT

Academic Year 2018-19
Department B. Com-General
Number of Respondents 14

Feedback Rate: Strongly Agree (5), Agree (4), Neutral (3), Disagree (2), Strongly Disagree (1)

S. No	Feedback on Curriculum, infrastructure facilities & ambience of the institution	5	4	3	2	1
1	Rate the sequence of the courses provided in the curriculum (Related to Curriculum)	7	5	0	1	1
2	Rate the syllabus of the courses in relation to the competencies expected out of the course (Related to Curriculum)	5	8	0	1	0
3	Rate the Curriculum facilitation for adoption of new techniques/education tools / strategies in teaching. (Related to Curriculum)	8	4	1	1	0
4	Rate the coverage of Programme / course outcome with the curriculum (Related to Curriculum)	11	1	2	0	0
5	Rate the allocation of the credits and contact hours (L-T-P) to the courses (Related to Curriculum)	6	6	1	1	0
6	Rate the offering of the electives in terms of their relevance to the specialization streams and technological advancements (Related to Curriculum)	8	4	1	1	0
7	Rate the courses in terms of extra learning or self-learning considering the design of the courses. (Related to Curriculum)	6	7	1	0	0
8	Rate the professional development, faculty development and administrative training programs conducted by the institution (Related to Curriculum)	7	5	2	0	0



PRINCE SHRI VENKATESWARA ARTS AND SCIENCE COLLEGE

Gowrivaldam, Chennai-600073.

Affiliated to University of Madras

9	Rate the composition of the courses in terms of Language papers, Core Papers, Allied Papers, Elective Papers, Soft Skills, Non-major Electives, Value Education, Project etc. (Related to Curriculum)	8	5	0	1	0
10	Rate the availability of text books, reference books, Digital Resources and Reading Material Support facilities in library and research environment (Related to infrastructure facilities & ambience of the institution)	11	2	0	0	1
11	Rate the infrastructure available in the college/ department and its usage efficiently (Related to infrastructure facilities & ambience of the institution)	6	7	1	0	0
12	Rate the classroom, lab, IT and other facilities (Related to infrastructure facilities & ambience of the institution)	4	8	2	0	0
13	Rate the maintenance of classrooms, laboratory, sports facilities, faculty cabin, toilets, rest rooms etc. (Related to infrastructure facilities & ambience of the institution)	6	5	3	0	0
14	Rate the encouragement by the institution for performing research, startup and entrepreneurial activities by the faculty (Related to ambience of the institution)	6	5	2	1	0
15	Rate the opportunity extended and financial aid to participate in Faculty development, Conferences, Workshops and etc., (Related to ambience of the institution)	8	6	0	0	0
16	Rate the working environment such as the relationship with co-workers and superiors, organizational culture etc. (Related to ambience of the institution)	7	4	3	0	0
17	Rate the faculty welfare measures taken by the institution (Related to ambience of the institution)	8	3	2	1	0
18	Rate the recognition/ appraisal system / Incentive/ Appreciation of the individual work by the institution (Related to ambience of the institution)	5	5	3	1	0
19	Rate the encouragement for taking-up consultancy works (Related to ambience of the institution)	10	3	1	0	0
20	Rate the uniform work distribution and work load for all the faculty in the department (Related to ambience of the institution)	7	6	1	0	0



B. Kalpana
PRINCIPAL
PRINCE SHRI VENKATESHWARA
ARTS AND SCIENCE COLLEGE
GOWRIVALDAM, CHENNAI-600 073.



PRINCE SHRI VENKATESWARA ARTS AND SCIENCE COLLEGE

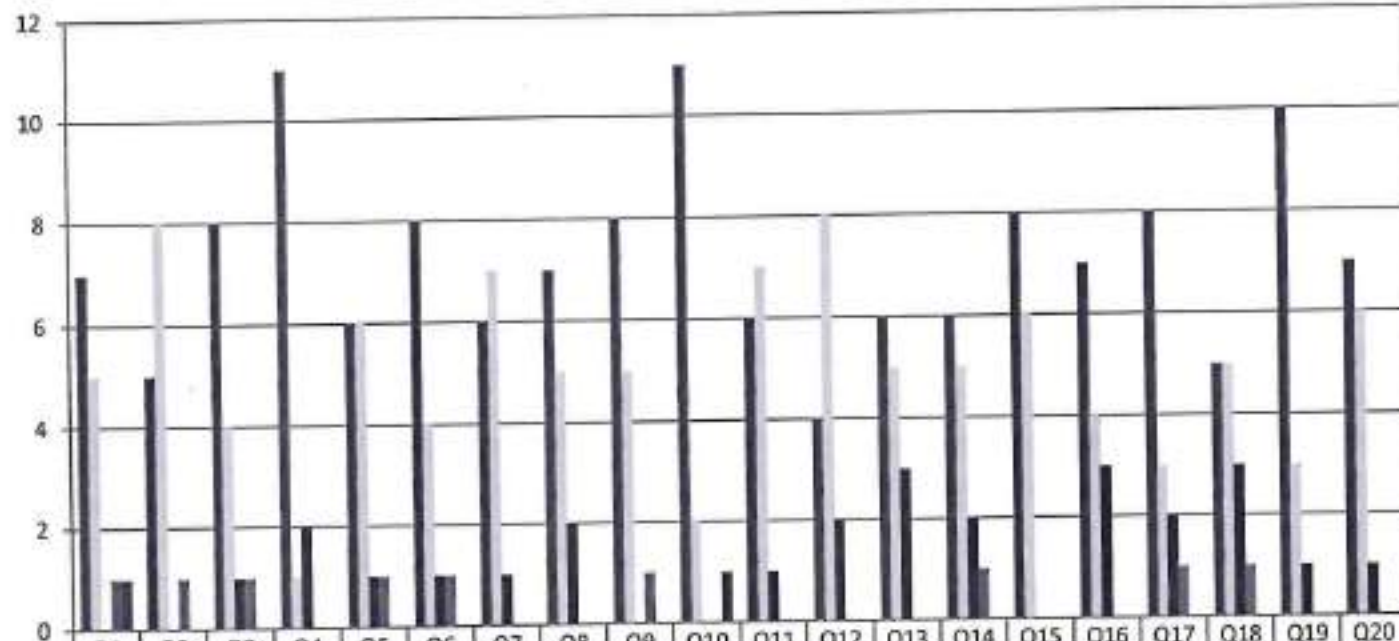
Gowriyadkam, Chennai-600073.

Affiliated to University of Madras

**FACULTY FEEDBACK ON CURRICULUM, INFRASTRUCTURE
FACILITIES & AMBIENCE OF THE INSTITUTION - 2018-2019**

B.COM (GENERAL)

(NUMBER OF RESPONDENTS - 14)



B. Kalpane
PRINCIPAL
 PRINCE SHRI VENKATESWARA
 ARTS AND SCIENCE COLLEGE
 GOWRIYADKAM, CHENNAI-600 073.



PRINCE SHRI VENKATESWARA ARTS AND SCIENCE COLLEGE

Gowrivaldkam, Chennai-600073.

Affiliated to University of Madras

FACULTY FEEDBACK ON CURRICULUM, INFRASTRUCTURE FACILITIES & AMBIENCE OF THE INSTITUTION – ANALYSIS REPORT

Academic Year 2018-19

Department BCA

Number of Respondents 12

Feedback Rate: Strongly Agree (5), Agree (4), Neutral (3), Disagree (2), Strongly Disagree (1)

S. No	Feedback on Curriculum, infrastructure facilities & ambience of the institution	5	4	3	2	1
1	Rate the sequence of the courses provided in the curriculum (Related to Curriculum)	7	3	0	1	1
2	Rate the syllabus of the courses in relation to the competencies expected out of the course (Related to Curriculum)	6	5	1	0	0
3	Rate the Curriculum facilitation for adoption of new techniques/education tools / strategies in teaching. (Related to Curriculum)	8	2	1	1	0
4	Rate the coverage of Programme / course outcome with the curriculum (Related to Curriculum)	10	0	2	0	0
5	Rate the allocation of the credits and contact hours (L-T-P) to the courses (Related to Curriculum)	6	4	1	1	0
6	Rate the offering of the electives in terms of their relevance to the specialization streams and technological advancements (Related to Curriculum)	8	2	1	1	0
7	Rate the courses in terms of extra learning or self-learning considering the design of the courses. (Related to Curriculum)	6	5	1	0	0
8	Rate the professional development, faculty development and administrative training programs conducted by the institution (Related to Curriculum)	7	3	2	0	0



PRINCE SHRI VENKATESWARA ARTS AND SCIENCE COLLEGE

Gowrivakkam, Chennai-600073.

Affiliated to University of Madras

9	Rate the composition of the courses in terms of Language papers, Core Papers, Allied Papers, Elective Papers, Soft Skills, Non-major Electives, Value Education, Project etc. (Related to Curriculum)	8	3	0	1	0
10	Rate the availability of text books, reference books, Digital Resources and Reading Material Support facilities in library and research environment (Related to infrastructure facilities & ambience of the institution)	11	0	0	0	1
11	Rate the infrastructure available in the college/ department and its usage efficiently (Related to infrastructure facilities & ambience of the institution)	6	5	1	0	0
12	Rate the classroom, lab, IT and other facilities (Related to infrastructure facilities & ambience of the institution)	4	6	2	0	0
13	Rate the maintenance of classrooms, laboratory, sports facilities, faculty cabin, toilets, rest rooms etc. (Related to infrastructure facilities & ambience of the institution)	6	3	3	0	0
14	Rate the encouragement by the institution for performing research, startup and entrepreneurial activities by the faculty (Related to ambience of the institution)	6	3	2	1	0
15	Rate the opportunity extended and financial aid to participate in Faculty development, Conferences, Workshops and etc., (Related to ambience of the institution)	8	4	0	0	0
16	Rate the working environment such as the relationship with co-workers and superiors, organizational culture etc. (Related to ambience of the institution)	7	2	3	0	0
17	Rate the faculty welfare measures taken by the institution (Related to ambience of the institution)	8	1	2	1	0
18	Rate the recognition/ appraisal system / Incentive/ Appreciation of the individual work by the institution (Related to ambience of the institution)	5	3	3	1	0
19	Rate the encouragement for taking-up consultancy works (Related to ambience of the institution)	10	1	1	0	0
20	Rate the uniform work distribution and work load for all the faculty in the department (Related to ambience of the institution)	7	4	1	0	0



B. Kalpana
PRINCIPAL

PRINCE SHRI VENKATESHWARA
ARTS AND SCIENCE COLLEGE
GOWRIVAKKAM, CHENNAI-600 073



PRINCE SHRI VENKATESWARA ARTS AND SCIENCE COLLEGE

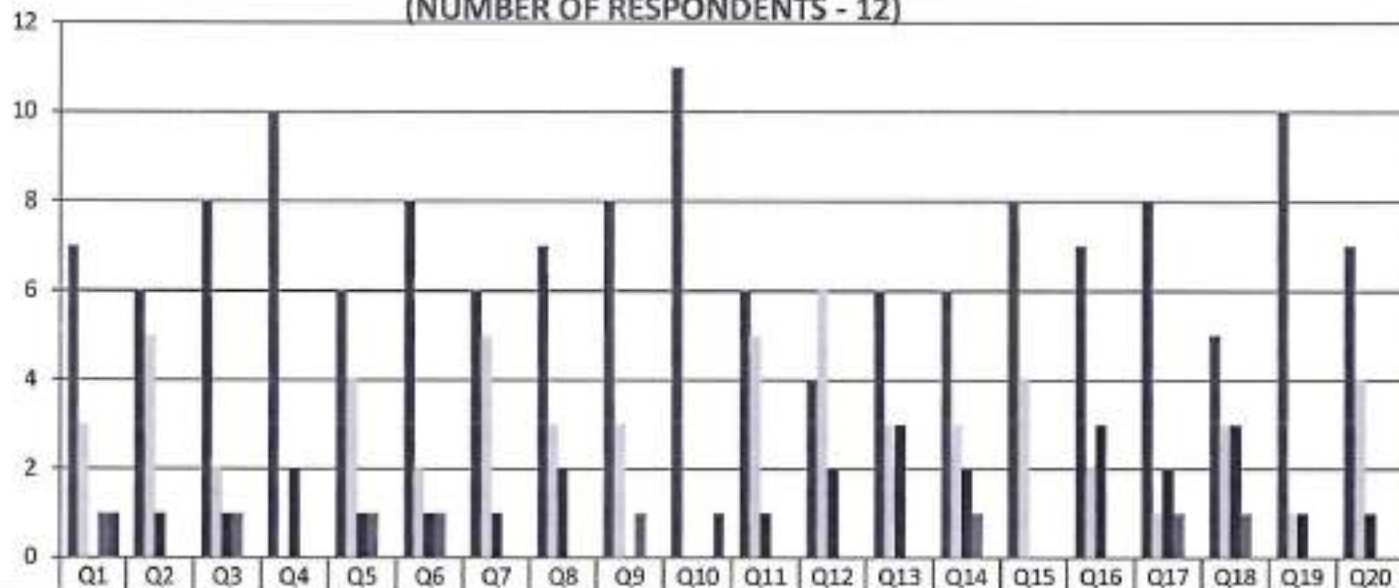
Gowrivakkam, Chennai-600073.

Affiliated to University of Madras

FACULTY FEEDBACK ON CURRICULUM, INFRASTRUCTURE FACILITIES & AMBIENCE OF THE INSTITUTION - 2018-2019

BCA

(NUMBER OF RESPONDENTS - 12)



	Q1	Q2	Q3	Q4	Q5	Q6	Q7	Q8	Q9	Q10	Q11	Q12	Q13	Q14	Q15	Q16	Q17	Q18	Q19	Q20
Strongly Agree (5)	7	6	8	10	6	8	6	7	8	11	6	4	6	6	8	7	8	5	10	7
Agree (4)	3	5	2	0	4	2	5	3	3	0	5	6	3	3	4	2	1	3	1	4
Neutral (3)	0	1	1	2	1	1	1	2	0	0	1	2	3	2	0	3	2	3	1	1
Disagree (2)	1	0	1	0	1	1	0	0	1	0	0	0	0	1	0	0	1	1	0	0
Strongly Disagree (1)	1	0	0	0	0	0	0	0	0	1	0	0	0	0	0	0	0	0	0	0



B. Kalpana
PRINCIPAL
 PRINCE SHRI VENKATESHWARA
 ARTS AND SCIENCE COLLEGE
 GOWRIVAKKAM CHENNAI-600 073.



PRINCE SHRI VENKATESWARA ARTS AND SCIENCE COLLEGE

Gowrivaldkam, Chennai-600073.

Affiliated to University of Madras

FACULTY FEEDBACK ON CURRICULUM, INFRASTRUCTURE FACILITIES & AMBIENCE OF THE INSTITUTION – ANALYSIS REPORT

Academic Year

2018-19

Department

B.Sc.-Biotechnology

Number of Respondents

6

Feedback Rate: Strongly Agree (5), Agree (4), Neutral (3), Disagree (2), Strongly Disagree (1)

S. No	Feedback on Curriculum, infrastructure facilities & ambience of the institution	5	4	3	2	1
1	Rate the sequence of the courses provided in the curriculum (Related to Curriculum)	3	2	0	0	1
2	Rate the syllabus of the courses in relation to the competencies expected out of the course (Related to Curriculum)	1	5	0	0	0
3	Rate the Curriculum facilitation for adoption of new techniques/education tools / strategies in teaching. (Related to Curriculum)	3	1	2	0	0
4	Rate the coverage of Programme / course outcome with the curriculum (Related to Curriculum)	4	0	2	0	0
5	Rate the allocation of the credits and contact hours (L-T-P) to the courses (Related to Curriculum)	1	3	1	1	0
6	Rate the offering of the electives in terms of their relevance to the specialization streams and technological advancements (Related to Curriculum)	3	2	1	0	0
7	Rate the courses in terms of extra learning or self-learning considering the design of the courses. (Related to Curriculum)	1	4	1	0	0
8	Rate the professional development, faculty development and administrative training programs conducted by the institution (Related to Curriculum)	2	2	2	0	0



PRINCE SHRI VENKATESWARA ARTS AND SCIENCE COLLEGE

Gowrivakkam, Chennai-600073.

Affiliated to University of Madras

9	Rate the composition of the courses in terms of Language papers, Core Papers, Allied Papers, Elective Papers, Soft Skills, Non-major Electives, Value Education, Project etc. (Related to Curriculum)	4	2	0	0	0
10	Rate the availability of text books, reference books, Digital Resources and Reading Material Support facilities in library and research environment (Related to infrastructure facilities & ambience of the institution)	5	0	0	0	1
11	Rate the infrastructure available in the college/ department and its usage efficiently (Related to infrastructure facilities & ambience of the institution)	1	4	1	0	0
12	Rate the classroom, lab, IT and other facilities (Related to infrastructure facilities & ambience of the institution)	0	4	2	0	0
13	Rate the maintenance of classrooms, laboratory, sports facilities, faculty cabin, toilets, rest rooms etc. (Related to infrastructure facilities & ambience of the institution)	1	2	3	0	0
14	Rate the encouragement by the institution for performing research, startup and entrepreneurial activities by the faculty (Related to ambience of the institution)	1	2	2	1	0
15	Rate the opportunity extended and financial aid to participate in Faculty development, Conferences, Workshops and etc., (Related to ambience of the institution)	3	3	0	0	0
16	Rate the working environment such as the relationship with co-workers and superiors, organizational culture etc. (Related to ambience of the institution)	2	1	3	0	0
17	Rate the faculty welfare measures taken by the institution (Related to ambience of the institution)	3	0	2	1	0
18	Rate the recognition/ appraisal system / Incentive/ Appreciation of the individual work by the institution (Related to ambience of the institution)	1	2	3	0	0
19	Rate the encouragement for taking-up consultancy works (Related to ambience of the institution)	5	0	1	0	0
	Rate the uniform work distribution and work load for all the faculty in the department (Related to ambience of the institution)	4	1	1	0	0



B. Kalpana
PRINCIPAL

PRINCE SHRI VENKATESWARA
ARTS AND SCIENCE COLLEGE



PRINCE SHRI VENKATESWARA ARTS AND SCIENCE COLLEGE

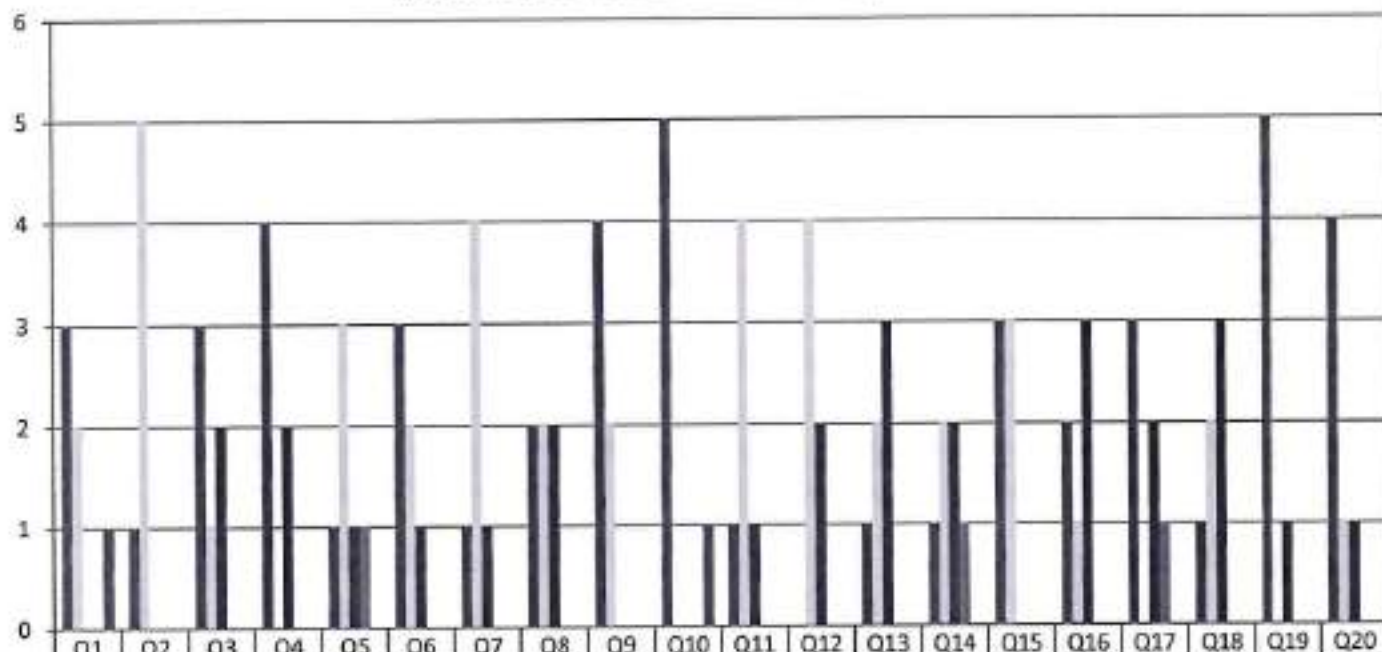
Gowrivakkam, Chennai-600073.

Affiliated to University of Madras

FACULTY FEEDBACK ON CURRICULUM, INFRASTRUCTURE FACILITIES & AMBIENCE OF THE INSTITUTION - 2018-2019

B.Sc. BIOTECHNOLOGY

(NUMBER OF RESPONDENTS - 6)



	Q1	Q2	Q3	Q4	Q5	Q6	Q7	Q8	Q9	Q10	Q11	Q12	Q13	Q14	Q15	Q16	Q17	Q18	Q19	Q20
Strongly Agree (5)	3	1	3	4	1	3	1	2	4	5	1	0	1	1	3	2	3	1	5	4
Agree (4)	2	5	1	0	3	2	4	2	2	0	4	4	2	2	3	1	0	2	0	1
Neutral (3)	0	0	2	2	1	1	1	2	0	0	1	2	3	2	0	3	2	3	1	1
Disagree (2)	0	0	0	0	1	0	0	0	0	0	0	0	0	1	0	0	1	0	0	0
Strongly Disagree (1)	1	0	0	0	0	0	0	0	0	1	0	0	0	0	0	0	0	0	0	0



P. Palpani
PRINCIPAL
 PRINCE SHRI VENKATESHWARA
 ARTS AND SCIENCE COLLEGE
 GOWRIVAKKAM, CHENNAI-600 073.



PRINCE SHRI VENKATESWARA ARTS AND SCIENCE COLLEGE

Gowrivakkam, Chennai-600073

Affiliated to University of Madras

FACULTY FEEDBACK ON CURRICULUM, INFRASTRUCTURE FACILITIES & AMBIENCE OF THE INSTITUTION – ANALYSIS REPORT

Academic Year

2018-19

Department

B. Com - Accounting and Finance

Number of Respondents

7

Feedback Rate: Strongly Agree (5), Agree (4), Neutral (3), Disagree (2), Strongly Disagree (1)

S. No	Feedback on Curriculum, infrastructure facilities & ambience of the institution	5	4	3	2	1
1	Rate the sequence of the courses provided in the curriculum (Related to Curriculum)	5	1	1	0	0
2	Rate the syllabus of the courses in relation to the competencies expected out of the course (Related to Curriculum)	6	0	0	1	0
3	Rate the Curriculum facilitation for adoption of new techniques/education tools / strategies in teaching. (Related to Curriculum)	3	3	1	0	0
4	Rate the coverage of Programme / course outcome with the curriculum (Related to Curriculum)	4	3	0	0	0
5	Rate the allocation of the credits and contact hours (L-T-P) to the courses (Related to Curriculum)	3	2	2	0	0
6	Rate the offering of the electives in terms of their relevance to the specialization streams and technological advancements (Related to Curriculum)	5	1	1	0	0
7	Rate the courses in terms of extra learning or self-learning considering the design of the courses. (Related to Curriculum)	6	0	1	0	0
8	Rate the professional development, faculty development and administrative training programs conducted by the institution (Related to Curriculum)	7	0	0	0	0



PRINCE SHRI VENKATESWARA ARTS AND SCIENCE COLLEGE

Gowrivakkam, Chennai-600073.

Affiliated to University of Madras

9	Rate the composition of the courses in terms of Language papers, Core Papers, Allied Papers, Elective Papers, Soft Skills, Non-major Electives, Value Education, Project etc. (Related to Curriculum)	5	0	1	1	0
10	Rate the availability of text books, reference books, Digital Resources and Reading Material Support facilities in library and research environment (Related to infrastructure facilities & ambience of the institution)	4	1	1	1	0
11	Rate the infrastructure available in the college/ department and its usage efficiently (Related to infrastructure facilities & ambience of the institution)	5	2	0	0	0
12	Rate the classroom, lab, IT and other facilities (Related to infrastructure facilities & ambience of the institution)	2	4	0	1	0
13	Rate the maintenance of classrooms, laboratory, sports facilities, faculty cabin, toilets, rest rooms etc. (Related to infrastructure facilities & ambience of the institution)	6	0	1	0	0
14	Rate the encouragement by the institution for performing research, startup and entrepreneurial activities by the faculty (Related to ambience of the institution)	3	2	2	0	0
15	Rate the opportunity extended and financial aid to participate in Faculty development, Conferences, Workshops and etc., (Related to ambience of the institution)	4	2	0	1	0
16	Rate the working environment such as the relationship with co-workers and superiors, organizational culture etc. (Related to ambience of the institution)	7	0	0	0	0
17	Rate the faculty welfare measures taken by the institution (Related to ambience of the institution)	4	3	0	0	0
18	Rate the recognition/ appraisal system / Incentive/ Appreciation of the individual work by the institution (Related to ambience of the institution)	2	2	3	0	0
19	Rate the encouragement for taking-up consultancy works (Related to ambience of the institution)	6	0	0	1	0
20	Rate the uniform work distribution and work load for all the faculty in the department (Related to ambience of the institution)	7	0	0	0	0



B. Kalpana
PRINCIPAL

PRINCE SHRI VENKATESHWARA
ARTS AND SCIENCE COLLEGE
GOWRIVAKKAM, CHENNAI-600 073



PRINCE SHRI VENKATESWARA ARTS AND SCIENCE COLLEGE

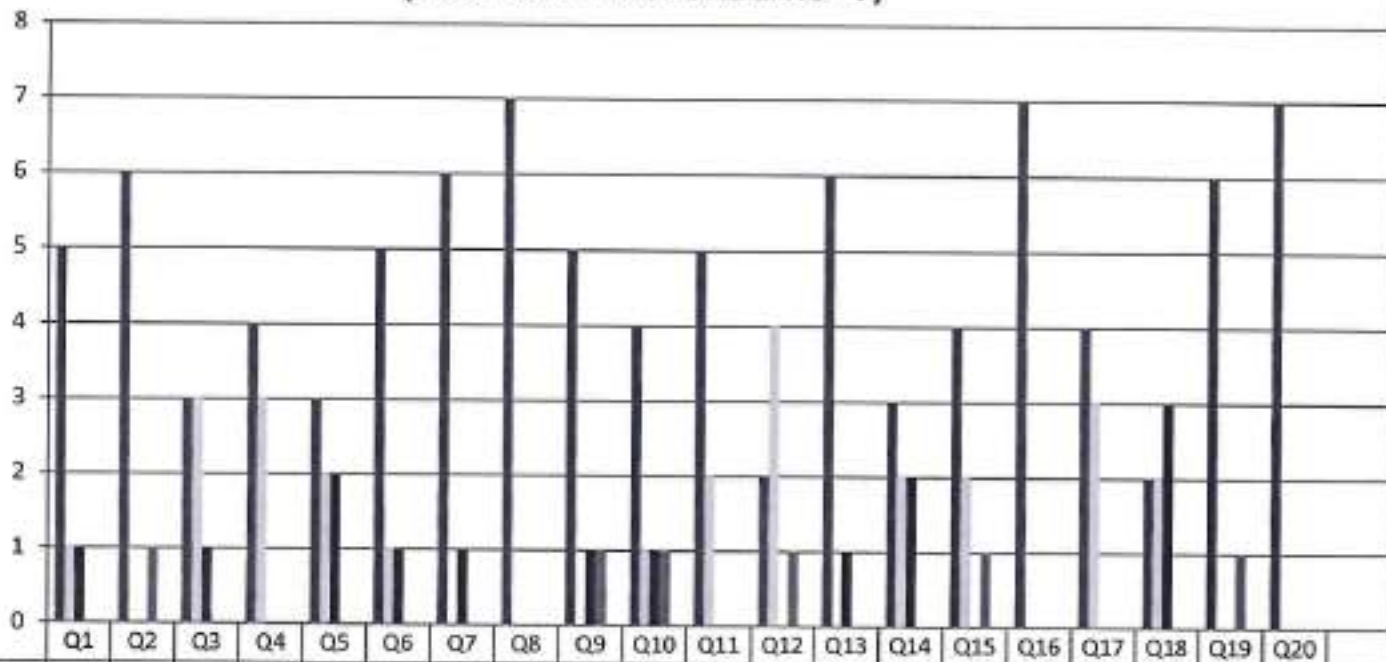
Gowrivakkam, Chennai-600073.

Affiliated to University of Madras

**FACULTY FEEDBACK ON CURRICULUM, INFRASTRUCTURE
FACILITIES & AMBIENCE OF THE INSTITUTION - 2018-2019**

B.COM (ACCOUNTING AND FINANCE)

(NUMBER OF RESPONDENTS - 7)



	Q1	Q2	Q3	Q4	Q5	Q6	Q7	Q8	Q9	Q10	Q11	Q12	Q13	Q14	Q15	Q16	Q17	Q18	Q19	Q20
Strongly Agree (5)	5	6	3	4	3	5	6	7	5	4	5	2	6	3	4	7	4	2	6	7
Agree (4)	1	0	3	3	2	1	0	0	0	1	2	4	0	2	2	0	3	2	0	0
Neutral (3)	1	0	1	0	2	1	1	0	1	1	0	0	1	2	0	0	0	3	0	0
Disagree (2)	0	1	0	0	0	0	0	0	1	1	0	1	0	0	1	0	0	0	1	0
Strongly Disagree (1)	0	0	0	0	0	0	0	0	0	0	0	0	0	0	0	0	0	0	0	0



PRINCIPAL
PRINCE SHRI VENKATESHWARA
ARTS AND SCIENCE COLLEGE
CHENNAI-600 073.



PRINCE SHRI VENKATESWARA ARTS AND SCIENCE COLLEGE

Gowrivakkam, Chennai-600073.

Affiliated to University of Madras

FACULTY FEEDBACK ON CURRICULUM, INFRASTRUCTURE FACILITIES & AMBIENCE OF THE INSTITUTION – ANALYSIS REPORT

Academic Year 2018-19
Department B.A. English
Number of Respondents 4

Feedback Rate: Strongly Agree (5), Agree (4), Neutral (3), Disagree (2), Strongly Disagree (1)

S. No	Feedback on Curriculum, infrastructure facilities & ambience of the institution	5	4	3	2	1
1	Rate the sequence of the courses provided in the curriculum (Related to Curriculum)	2	1	1	0	0
2	Rate the syllabus of the courses in relation to the competencies expected out of the course (Related to Curriculum)	3	0	0	1	0
3	Rate the Curriculum facilitation for adoption of new techniques/education tools / strategies in teaching. (Related to Curriculum)	1	2	1	0	0
4	Rate the coverage of Programme / course outcome with the curriculum (Related to Curriculum)	1	1	2	0	0
5	Rate the allocation of the credits and contact hours (L-T-P) to the courses (Related to Curriculum)	2	2	0	0	0
6	Rate the offering of the electives in terms of their relevance to the specialization streams and technological advancements (Related to Curriculum)	1	2	1	0	0
7	Rate the courses in terms of extra learning or self-learning considering the design of the courses. (Related to Curriculum)	3	1	0	0	0
8	Rate the professional development, faculty development and administrative training programs conducted by the institution (Related to Curriculum)	3	0	1	0	0



PRINCE SHRI VENKATESWARA ARTS AND SCIENCE COLLEGE

Gowrivakkam, Chennai-600073.

Affiliated to University of Madras

9	Rate the composition of the courses in terms of Language papers, Core Papers, Allied Papers, Elective Papers, Soft Skills, Non-major Electives, Value Education, Project etc. (Related to Curriculum)	3	1	0	0	0
10	Rate the availability of text books, reference books, Digital Resources and Reading Material Support facilities in library and research environment (Related to infrastructure facilities & ambience of the institution)	2	1	1	0	0
11	Rate the infrastructure available in the college/ department and its usage efficiently (Related to infrastructure facilities & ambience of the institution)	3	1	0	0	0
12	Rate the classroom, lab, IT and other facilities (Related to infrastructure facilities & ambience of the institution)	2	1	1	0	0
13	Rate the maintenance of classrooms, laboratory, sports facilities, faculty cabin, toilets, rest rooms etc. (Related to infrastructure facilities & ambience of the institution)	2	0	2	0	0
14	Rate the encouragement by the institution for performing research, startup and entrepreneurial activities by the faculty (Related to ambience of the institution)	1	2	1	0	0
15	Rate the opportunity extended and financial aid to participate in Faculty development, Conferences, Workshops and etc., (Related to ambience of the institution)	2	1	1	0	0
16	Rate the working environment such as the relationship with co-workers and superiors, organizational culture etc. (Related to ambience of the institution)	3	0	1	0	0
17	Rate the faculty welfare measures taken by the institution (Related to ambience of the institution)	2	0	2	0	0
18	Rate the recognition/ appraisal system / Incentive/ Appreciation of the individual work by the institution (Related to ambience of the institution)	3	0	1	0	0
19	Rate the encouragement for taking-up consultancy works (Related to ambience of the institution)	3	0	1	0	0
20	Rate the uniform work distribution and work load for all the faculty in the department (Related to ambience of the institution)	3	1	0	0	0



B. Kalpana
PRINCIPAL
PRINCE SHRI VENKATESHWARA
ARTS AND SCIENCE COLLEGE
GOWRIVAKKAM, CHENNAI-600 073.



PRINCE SHRI VENKATESWARA ARTS AND SCIENCE COLLEGE

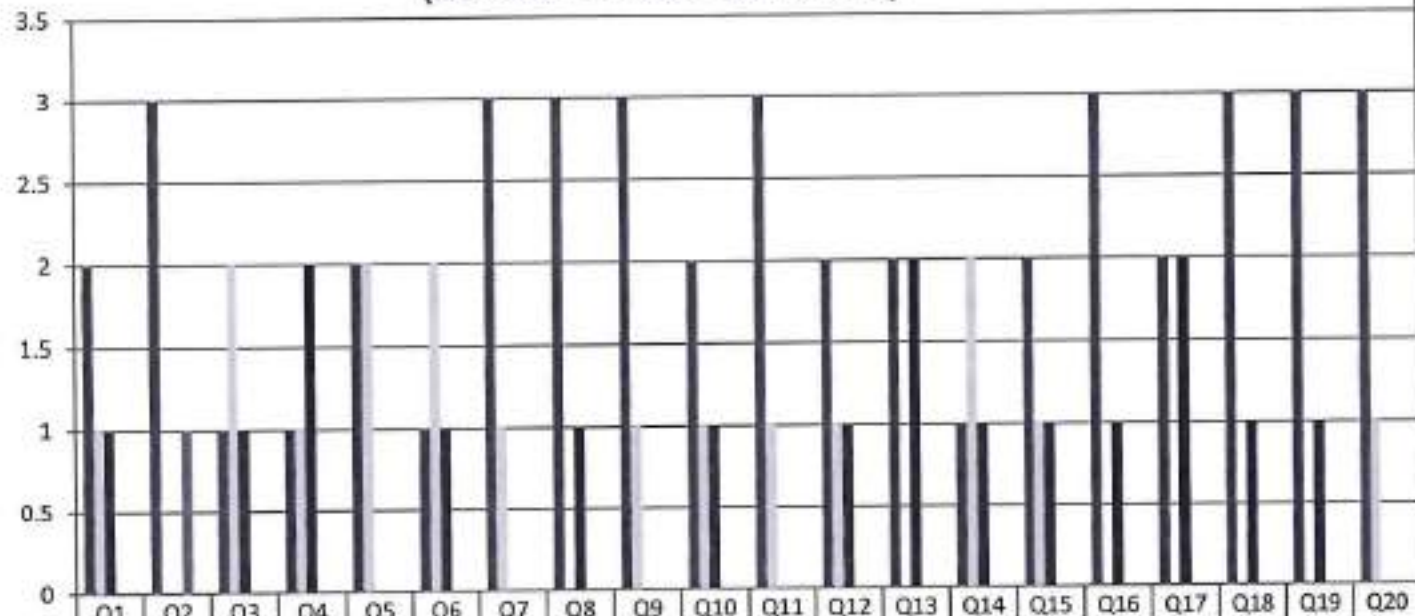
Gowrivakkam, Chennai-600073.

Affiliated to University of Madras

FACULTY FEEDBACK ON CURRICULUM, INFRASTRUCTURE FACILITIES & AMBIENCE OF THE INSTITUTION - 2018-2019

B.A. ENGLISH

(NUMBER OF RESPONDENTS - 4)



Strongly Agree (5)	2	3	1	1	2	1	3	3	3	2	3	2	2	1	2	3	2	3	3	3
Agree (4)	1	0	2	1	2	2	1	0	1	1	1	1	0	2	1	0	0	0	0	1
Neutral (3)	1	0	1	2	0	1	0	1	0	1	0	1	2	1	1	1	2	1	1	0
Disagree (2)	0	1	0	0	0	0	0	0	0	0	0	0	0	0	0	0	0	0	0	0
Strongly Disagree (1)	0	0	0	0	0	0	0	0	0	0	0	0	0	0	0	0	0	0	0	0



B. Kalpana
PRINCIPAL

PRINCE SHRI VENKATESHWARA
ARTS AND SCIENCE COLLEGE

GOWRIVAKKAM, CHENNAI-600 073



PRINCE SHRI VENKATESWARA ARTS AND SCIENCE COLLEGE

Gowrivakkam, Chennai-600073.

Affiliated to University of Madras

FACULTY FEEDBACK ON CURRICULUM, INFRASTRUCTURE FACILITIES & AMBIENCE OF THE INSTITUTION – ANALYSIS REPORT

Academic Year 2018-19
Department M.Sc. Microbiology
Number of Respondents 3

Feedback Rate: Strongly Agree (5), Agree (4), Neutral (3), Disagree (2), Strongly Disagree (1)

S. No	Feedback on Curriculum, infrastructure facilities & ambience of the institution	5	4	3	2	1
1	Rate the sequence of the courses provided in the curriculum (Related to Curriculum)	1	2	0	0	0
2	Rate the syllabus of the courses in relation to the competencies expected out of the course (Related to Curriculum)	0	1	2	0	0
3	Rate the Curriculum facilitation for adoption of new techniques/education tools / strategies in teaching. (Related to Curriculum)	1	1	1	0	0
4	Rate the coverage of Programme / course outcome with the curriculum (Related to Curriculum)	2	0	1	0	0
5	Rate the allocation of the credits and contact hours (L-T-P) to the courses (Related to Curriculum)	0	3	0	0	0
6	Rate the offering of the electives in terms of their relevance to the specialization streams and technological advancements (Related to Curriculum)	1	2	0	0	0
7	Rate the courses in terms of extra learning or self-learning considering the design of the courses. (Related to Curriculum)	1	1	0	1	0
8	Rate the professional development, faculty development and administrative training programs conducted by the institution (Related to Curriculum)	1	1	1	0	0



PRINCE SHRI VENKATESWARA ARTS AND SCIENCE COLLEGE

Gowrivakkam, Chennai-600073.

Affiliated to University of Madras

9	Rate the composition of the courses in terms of Language papers, Core Papers, Allied Papers, Elective Papers, Soft Skills, Non-major Electives, Value Education, Project etc. (Related to Curriculum)	2	1	0	0	0
10	Rate the availability of text books, reference books, Digital Resources and Reading Material Support facilities in library and research environment (Related to infrastructure facilities & ambience of the institution)	2	1	0	0	0
11	Rate the infrastructure available in the college/ department and its usage efficiently (Related to infrastructure facilities & ambience of the institution)	1	2	0	0	0
12	Rate the classroom, lab, IT and other facilities (Related to infrastructure facilities & ambience of the institution)	1	1	0	1	0
13	Rate the maintenance of classrooms, laboratory, sports facilities, faculty cabin, toilets, rest rooms etc. (Related to infrastructure facilities & ambience of the institution)	1	1	1	0	0
14	Rate the encouragement by the institution for performing research, startup and entrepreneurial activities by the faculty (Related to ambience of the institution)	0	3	0	0	0
15	Rate the opportunity extended and financial aid to participate in Faculty development, Conferences, Workshops and etc., (Related to ambience of the institution)	1	1	1	0	0
16	Rate the working environment such as the relationship with co-workers and superiors, organizational culture etc. (Related to ambience of the institution)	1	2	0	0	0
17	Rate the faculty welfare measures taken by the institution (Related to ambience of the institution)	2	0	1	0	0
18	Rate the recognition/ appraisal system / Incentive/ Appreciation of the individual work by the institution (Related to ambience of the institution)	2	1	0	0	0
19	Rate the encouragement for taking-up consultancy works (Related to ambience of the institution)	1	2	0	0	0
20	Rate the uniform work distribution and work load for all the faculty in the department (Related to ambience of the institution)	0	3	0	0	0



B. Kalpana
PRINCIPAL

**PRINCE SHRI VENKATESHWARA
ARTS AND SCIENCE COLLEGE**

GOWRIVAKKAM, CHENNAI-600 073



PRINCE SHRI VENKATESWARA ARTS AND SCIENCE COLLEGE

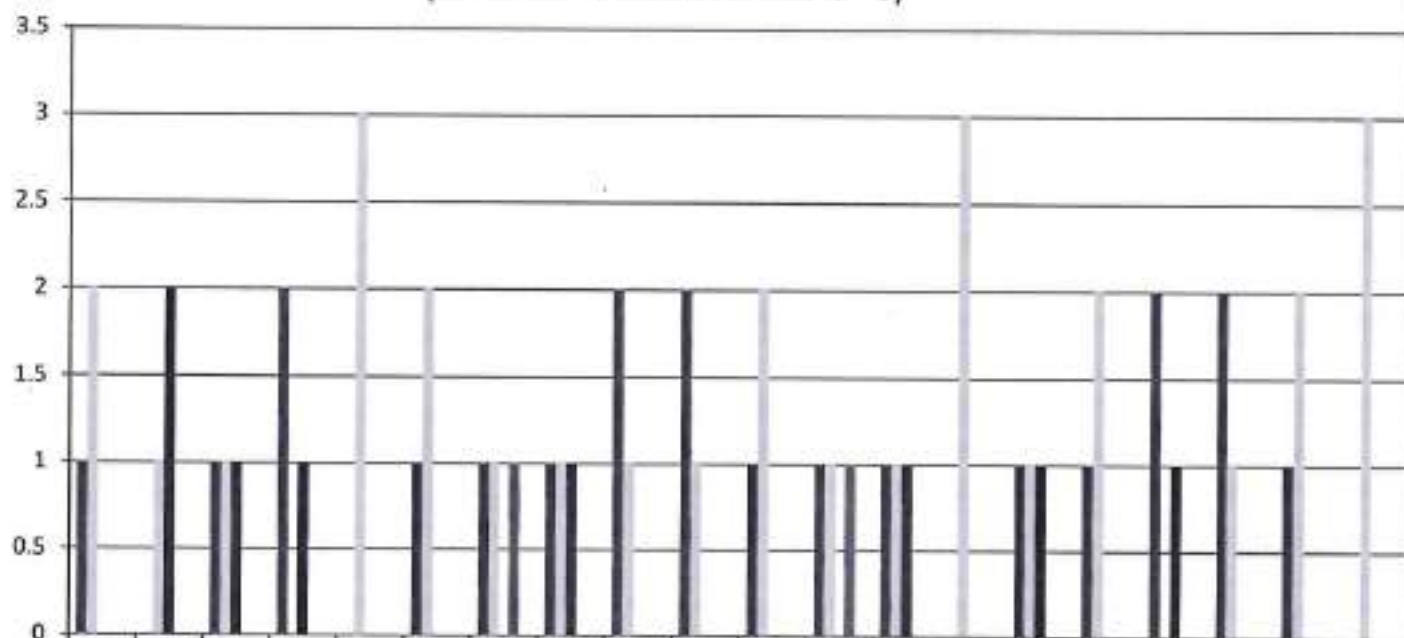
Gowrivakkam, Chennai-600073.

Affiliated to University of Madras

**FACULTY FEEDBACK ON CURRICULUM, INFRASTRUCTURE
FACILITIES & AMBIENCE OF THE INSTITUTION - 2018-2019**

M.Sc. MICROBIOLOGY

(NUMBER OF RESPONDENTS - 3)



	Q1	Q2	Q3	Q4	Q5	Q6	Q7	Q8	Q9	Q10	Q11	Q12	Q13	Q14	Q15	Q16	Q17	Q18	Q19	Q20
Strongly Agree (5)	1	0	1	2	0	1	1	1	2	2	1	1	1	0	1	1	2	2	1	0
Agree (4)	2	1	1	0	3	2	1	1	1	1	2	1	1	3	1	2	0	1	2	3
Neutral (3)	0	2	1	1	0	0	0	1	0	0	0	0	1	0	1	0	1	0	0	0
Disagree (2)	0	0	0	0	0	0	1	0	0	0	0	1	0	0	0	0	0	0	0	0
Strongly Disagree (1)	0	0	0	0	0	0	0	0	0	0	0	0	0	0	0	0	0	0	0	0



B. Kalpana
PRINCIPAL



PRINCE SHRI VENKATESWARA ARTS AND SCIENCE COLLEGE

Gowrivaikam, Chennai-600073.

Affiliated to University of Madras

9	Rate the composition of the courses in terms of Language papers, Core Papers, Allied Papers, Elective Papers, Soft Skills, Non-major Electives, Value Education, Project etc. (Related to Curriculum)	2	1	0	0	0
10	Rate the availability of text books, reference books, Digital Resources and Reading Material Support facilities in library and research environment (Related to infrastructure facilities & ambience of the institution)	2	1	0	0	0
11	Rate the infrastructure available in the college/ department and its usage efficiently (Related to infrastructure facilities & ambience of the institution)	1	2	0	0	0
12	Rate the classroom, lab, IT and other facilities (Related to infrastructure facilities & ambience of the institution)	0	2	1	0	0
13	Rate the maintenance of classrooms, laboratory, sports facilities, faculty cabin, toilets, rest rooms etc. (Related to infrastructure facilities & ambience of the institution)	1	1	1	0	0
14	Rate the encouragement by the institution for performing research, startup and entrepreneurial activities by the faculty (Related to ambience of the institution)	2	0	1	0	0
15	Rate the opportunity extended and financial aid to participate in Faculty development, Conferences, Workshops and etc., (Related to ambience of the institution)	1	2	0	0	0
16	Rate the working environment such as the relationship with co-workers and superiors, organizational culture etc. (Related to ambience of the institution)	2	1	0	0	0
17	Rate the faculty welfare measures taken by the institution (Related to ambience of the institution)	0	2	1	0	0
18	Rate the recognition/ appraisal system / Incentive/ Appreciation of the individual work by the institution (Related to ambience of the institution)	2	1	0	0	0
19	Rate the encouragement for taking-up consultancy works (Related to ambience of the institution)	1	2	0	0	0
20	Rate the uniform work distribution and work load for all the faculty in the department (Related to ambience of the institution)	1	2	0	0	0



B. Kalpana
PRINCIPAL
PRINCE SHRI VENKATESHWARA
ARTS AND SCIENCE COLLEGE
GOWRIVAKKAM, CHENNAI-600 073.



PRINCE SHRI VENKATESWARA ARTS AND SCIENCE COLLEGE

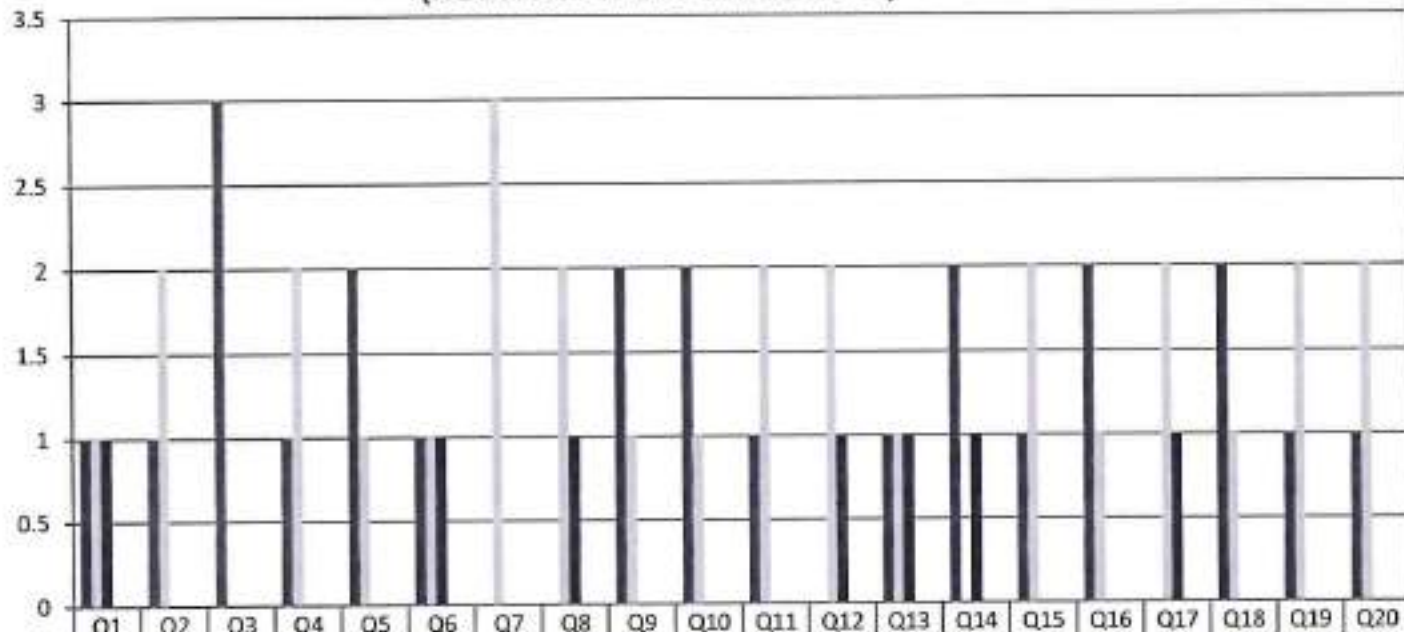
Gowrivakkam, Chennai-600073.

Affiliated to University of Madras

**FACULTY FEEDBACK ON CURRICULUM, INFRASTRUCTURE
FACILITIES & AMBIENCE OF THE INSTITUTION - 2018-2019**

M.Sc. COMPUTER SCIENCE

(NUMBER OF RESPONDENTS - 3)



	Q1	Q2	Q3	Q4	Q5	Q6	Q7	Q8	Q9	Q10	Q11	Q12	Q13	Q14	Q15	Q16	Q17	Q18	Q19	Q20
Strongly Agree (5)	1	1	3	1	2	1	0	0	2	2	1	0	1	2	1	2	0	2	1	1
Agree (4)	1	2	0	2	1	1	3	2	1	1	2	2	1	0	2	1	2	1	2	2
Neutral (3)	1	0	0	0	0	1	0	1	0	0	0	1	1	1	0	0	1	0	0	0
Disagree (2)	0	0	0	0	0	0	0	0	0	0	0	0	0	0	0	0	0	0	0	0
Strongly Disagree (1)	0	0	0	0	0	0	0	0	0	0	0	0	0	0	0	0	0	0	0	0



B. Kalpana
PRINCIPAL
PRINCE SHRI VENKATESHWARA
ARTS AND SCIENCE COLLEGE
GOWRIVAKKAM, CHENNAI-600 073.



PRINCE SHRI VENKATESWARA ARTS AND SCIENCE COLLEGE

Gowrivakkam, Chennai-600073.

Affiliated to University of Madras

FACULTY FEEDBACK ON CURRICULUM, INFRASTRUCTURE FACILITIES & AMBIENCE OF THE INSTITUTION – ANALYSIS REPORT

Academic Year 2018-19
Department M.Sc. Biochemistry
Number of Respondents 2

Feedback Rate: Strongly Agree (5), Agree (4), Neutral (3), Disagree (2), Strongly Disagree (1)

S. No	Feedback on Curriculum, infrastructure facilities & ambience of the institution	5	4	3	2	1
1	Rate the sequence of the courses provided in the curriculum (Related to Curriculum)	2	0	0	0	0
2	Rate the syllabus of the courses in relation to the competencies expected out of the course (Related to Curriculum)	1	1	0	0	0
3	Rate the Curriculum facilitation for adoption of new techniques/education tools / strategies in teaching. (Related to Curriculum)	2	0	0	0	0
4	Rate the coverage of Programme / course outcome with the curriculum (Related to Curriculum)	2	0	0	0	0
5	Rate the allocation of the credits and contact hours (L-T-P) to the courses (Related to Curriculum)	1	1	0	0	0
6	Rate the offering of the electives in terms of their relevance to the specialization streams and technological advancements (Related to Curriculum)	0	2	0	0	0
7	Rate the courses in terms of extra learning or self-learning considering the design of the courses. (Related to Curriculum)	1	0	1	0	0
8	Rate the professional development, faculty development and administrative training programs conducted by the institution (Related to Curriculum)	2	0	0	0	0



PRINCE SHRI VENKATESWARA ARTS AND SCIENCE COLLEGE

Gowrivaikam, Chennai-600073.

Affiliated to University of Madras

9	Rate the composition of the courses in terms of Language papers, Core Papers, Allied Papers, Elective Papers, Soft Skills, Non-major Electives, Value Education, Project etc. (Related to Curriculum)	2	0	0	0	0
10	Rate the availability of text books, reference books, Digital Resources and Reading Material Support facilities in library and research environment (Related to infrastructure facilities & ambience of the institution)	1	1	0	0	0
11	Rate the infrastructure available in the college/ department and its usage efficiently (Related to infrastructure facilities & ambience of the institution)	2	0	0	0	0
12	Rate the classroom, lab, IT and other facilities (Related to infrastructure facilities & ambience of the institution)	2	0	0	0	0
13	Rate the maintenance of classrooms, laboratory, sports facilities, faculty cabin, toilets, rest rooms etc. (Related to infrastructure facilities & ambience of the institution)	1	1	0	0	0
14	Rate the encouragement by the institution for performing research, startup and entrepreneurial activities by the faculty (Related to ambience of the institution)	2	0	0	0	0
15	Rate the opportunity extended and financial aid to participate in Faculty development, Conferences, Workshops and etc., (Related to ambience of the institution)	2	0	0	0	0
16	Rate the working environment such as the relationship with co-workers and superiors, organizational culture etc. (Related to ambience of the institution)	2	0	0	0	0
17	Rate the faculty welfare measures taken by the institution (Related to ambience of the institution)	2	0	0	0	0
18	Rate the recognition/ appraisal system / Incentive/ Appreciation of the individual work by the institution (Related to ambience of the institution)	1	0	1	0	0
19	Rate the encouragement for taking-up consultancy works (Related to ambience of the institution)	2	0	0	0	0
20	Rate the uniform work distribution and work load for all the faculty in the department (Related to ambience of the institution)	2	0	0	0	0



B. Kalpana
PRINCIPAL

PRINCE SHRI VENKATESHWARA
ARTS AND SCIENCE COLLEGE
GOWRIVAKKAM, CHENNAI-600 073.



PRINCE SHRI VENKATESWARA ARTS AND SCIENCE COLLEGE

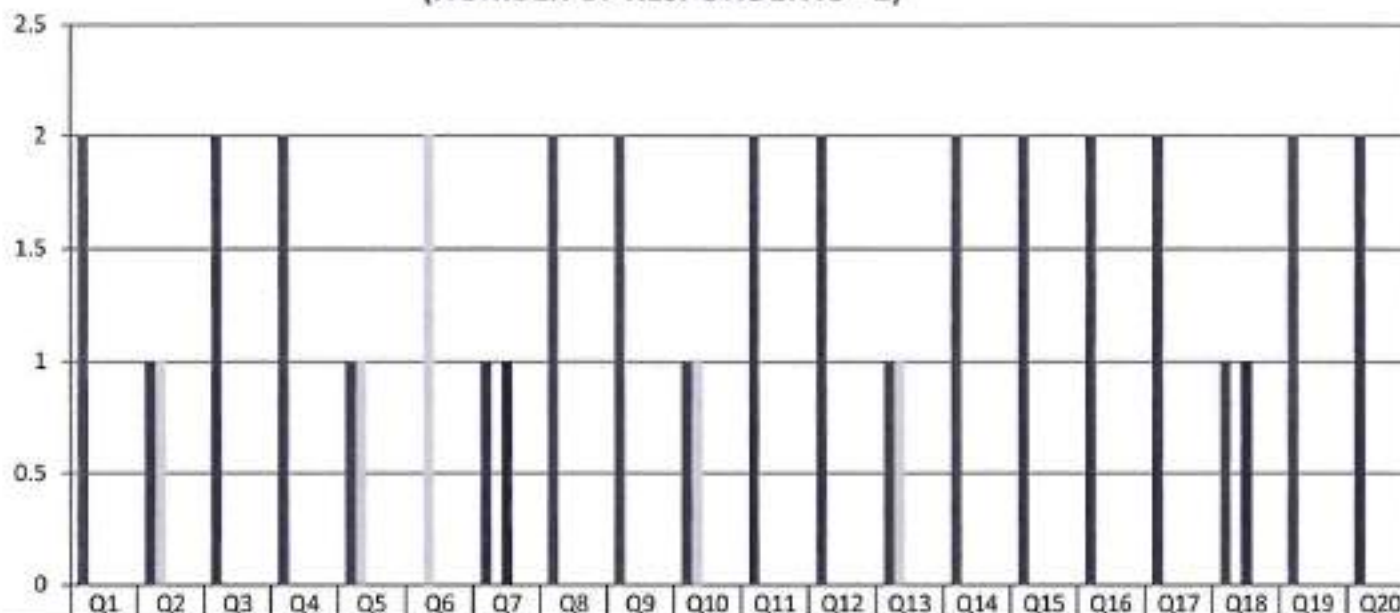
Gowrivakkam, Chennai-600073.

Affiliated to University of Madras

**FACULTY FEEDBACK ON CURRICULUM, INFRASTRUCTURE
FACILITIES & AMBIENCE OF THE INSTITUTION - 2018-2019**

M.Sc. BIOCHEMISTRY

(NUMBER OF RESPONDENTS - 2)



	Q1	Q2	Q3	Q4	Q5	Q6	Q7	Q8	Q9	Q10	Q11	Q12	Q13	Q14	Q15	Q16	Q17	Q18	Q19	Q20
Strongly Agree (5)	2	1	2	2	1	0	1	2	2	1	2	2	1	2	2	2	2	1	2	2
Agree (4)	0	1	0	0	1	2	0	0	0	1	0	0	1	0	0	0	0	0	0	0
Neutral (3)	0	0	0	0	0	0	1	0	0	0	0	0	0	0	0	0	0	1	0	0
Disagree (2)	0	0	0	0	0	0	0	0	0	0	0	0	0	0	0	0	0	0	0	0
Strongly Disagree (1)	0	0	0	0	0	0	0	0	0	0	0	0	0	0	0	0	0	0	0	0



B. Kalpana
PRINCIPAL
PRINCE SHRI VENKATESHWARA
ARTS AND SCIENCE COLLEGE
GOWRIVAKKAM, CHENNAI-600 073.



PRINCE SHRI VENKATESWARA ARTS AND SCIENCE COLLEGE

Gowrivaldkam, Chennai-600073.

Affiliated to University of Madras

FACULTY FEEDBACK ON CURRICULUM, INFRASTRUCTURE FACILITIES & AMBIENCE OF THE INSTITUTION – ANALYSIS REPORT

Academic Year 2018-19
Department M.Sc. Biotechnology
Number of Respondents 3

Feedback Rate: Strongly Agree (5), Agree (4), Neutral (3), Disagree (2), Strongly Disagree (1)

S. No	Feedback on Curriculum, infrastructure facilities & ambience of the institution	5	4	3	2	1
1	Rate the sequence of the courses provided in the curriculum (Related to Curriculum)	2	1	0	0	0
2	Rate the syllabus of the courses in relation to the competencies expected out of the course (Related to Curriculum)	1	2	0	0	0
3	Rate the Curriculum facilitation for adoption of new techniques/education tools / strategies in teaching. (Related to Curriculum)	2	1	0	0	0
4	Rate the coverage of Programme / course outcome with the curriculum (Related to Curriculum)	3	0	0	0	0
5	Rate the allocation of the credits and contact hours (L-T-P) to the courses (Related to Curriculum)	1	2	0	0	0
6	Rate the offering of the electives in terms of their relevance to the specialization streams and technological advancements (Related to Curriculum)	2	1	0	0	0
7	Rate the courses in terms of extra learning or self-learning considering the design of the courses. (Related to Curriculum)	1	1	1	0	0
8	Rate the professional development, faculty development and administrative training programs conducted by the institution (Related to Curriculum)	2	1	0	0	0



PRINCE SHRI VENKATESWARA ARTS AND SCIENCE COLLEGE

Gowrivakkam, Chennai-600073.

Affiliated to University of Madras

9	Rate the composition of the courses in terms of Language papers, Core Papers, Allied Papers, Elective Papers, Soft Skills, Non-major Electives, Value Education, Project etc. (Related to Curriculum)	1	1	1	0	0
10	Rate the availability of text books, reference books, Digital Resources and Reading Material Support facilities in library and research environment (Related to infrastructure facilities & ambience of the institution)	1	2	0	0	0
11	Rate the infrastructure available in the college/ department and its usage efficiently (Related to infrastructure facilities & ambience of the institution)	2	1	0	0	0
12	Rate the classroom, lab, IT and other facilities (Related to infrastructure facilities & ambience of the institution)	2	1	0	0	0
13	Rate the maintenance of classrooms, laboratory, sports facilities, faculty cabin, toilets, rest rooms etc. (Related to infrastructure facilities & ambience of the institution)	3	0	0	0	0
14	Rate the encouragement by the institution for performing research, startup and entrepreneurial activities by the faculty (Related to ambience of the institution)	1	2	0	0	0
15	Rate the opportunity extended and financial aid to participate in Faculty development, Conferences, Workshops and etc., (Related to ambience of the institution)	2	1	0	0	0
16	Rate the working environment such as the relationship with co-workers and superiors, organizational culture etc. (Related to ambience of the institution)	2	1	0	0	0
17	Rate the faculty welfare measures taken by the institution (Related to ambience of the institution)	2	0	1	0	0
18	Rate the recognition/ appraisal system / Incentive/ Appreciation of the individual work by the institution (Related to ambience of the institution)	1	2	0	0	0
19	Rate the encouragement for taking-up consultancy works (Related to ambience of the institution)	3	0	0	0	0
20	Rate the uniform work distribution and work load for all the faculty in the department (Related to ambience of the institution)	2	1	0	0	0



B. Kalpana
PRINCIPAL
PRINCE SHRI VENKATESHWARA
ARTS AND SCIENCE COLLEGE
GOWRIVAKKAM, CHENNAI-600 073



PRINCE SHRI VENKATESWARA ARTS AND SCIENCE COLLEGE

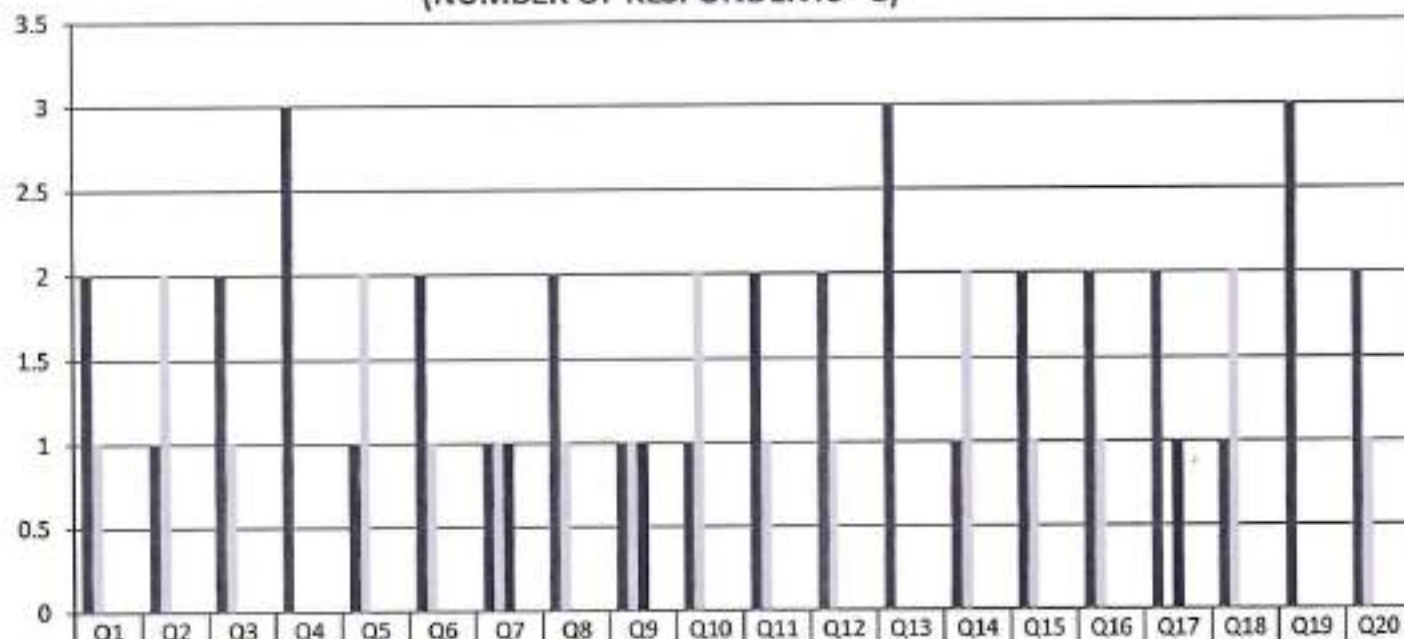
Gowrivakkam, Chennai-600073.

Affiliated to University of Madras

FACULTY FEEDBACK ON CURRICULUM, INFRASTRUCTURE FACILITIES & AMBIENCE OF THE INSTITUTION - 2018-2019

M.Sc. BIOTECHNOLOGY

(NUMBER OF RESPONDENTS - 3)



Strongly Agree (5)	2	1	2	3	1	2	1	2	1	1	2	2	3	1	2	2	2	1	3	2
Agree (4)	1	2	1	0	2	1	1	1	1	2	1	1	0	2	1	1	0	2	0	1
Neutral (3)	0	0	0	0	0	0	1	0	1	0	0	0	0	0	0	0	1	0	0	0
Disagree (2)	0	0	0	0	0	0	0	0	0	0	0	0	0	0	0	0	0	0	0	0
Strongly Disagree (1)	0	0	0	0	0	0	0	0	0	0	0	0	0	0	0	0	0	0	0	0



B. Kalpana
PRINCIPAL

PRINCE SHRI VENKATESHWARA
ARTS AND SCIENCE COLLEGE
GOWRIVAKKAM, CHENNAI-600 073.